

# Cognisys Sabre Reflash Instructions

---

So what is “Reflash” anyways? This is the process of erasing Sabre’s software and loading in a new version. Should you reprogram your controller? Not always – If it is doing everything you want there is no advantage of loading new firmware. If, however, there is a new feature that you want – then by all means upgrade!

Is there risk? Think of updating the firmware as a brain transplant for your controller. Yes, there is risk, but we’ve worked hard to minimize that risk. That being said, refrain from removing power or disconnecting Wifi while it is in the middle of reprogramming. If you are in bootloader mode but haven’t started reflashing the controller, you can turn it off by pressing the power button.

Before starting be sure to un-install any previous version of our Reflash product before continuing.

The Reflash program requires Oracle’s Java. If this is not present on the PC that you are using you will be taken to Oracle’s web-site. If you are using a Mac, you will have to explicitly download Java from here if it is not already present on your computer:

<http://java.com/en/download/index.jsp>

## PC users:

Download the reflash installer from here:

<http://www.cognisys-inc.com/downloads/reflash/java/ReflashSetup.msi>

Run the installer and follow the installation instructions. The application will be installed on your start menu under a “Cognisys” folder.

## Mac users:

Download the reflash package from here:

<http://www.cognisys-inc.com/downloads/reflash/ReflashInstaller.dmg>

Run the package installer and follow the installation instructions. The application will be on your Launchpad.

*If the firmware package (zip file) you downloaded includes a “gs2011xxxx.bin” file (where “xxxx” can vary), you should first update the firmware on your Wifi module. If not, please skip to the “Updating Sabre Firmware” section below.*

## **Updating Wifi Firmware:**

First you will need to get Sabre into bootloader mode.

1. With Sabre turned off, press and hold the power button until the power LED starts flashing (approximately 15 seconds).

2. Release the power button.
3. Your Sabre is now in bootloader mode.

Now, using your computer's Wifi settings, connect up to your Sabre. Once connected, use your browser (Firefox has issues, so use an alternative) to go to this address:

<http://192.168.1.1/otafu.html>

You should see a prompt to select the file. Click the "Browse" button, and choose the "gs2011xxxxx.bin" file that is part of the zip file you downloaded containing the firmware. Then press the "Upload" button.

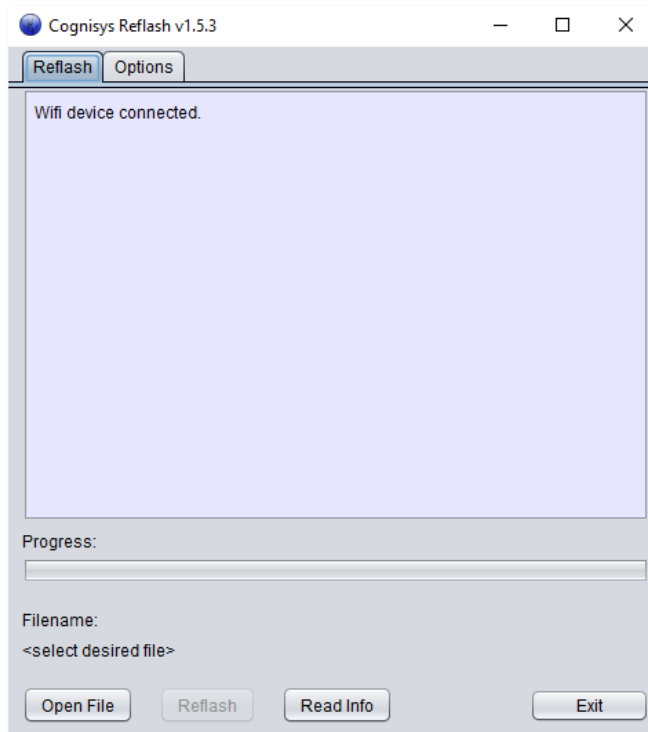
Once complete, you will see "Firmware Upgrade upload Success". You can now power off your Sabre.

## Updating Sabre Firmware:

Run the “Reflash” program installed under Start->Cognisys->Reflash, or just “Reflash” on a Mac.

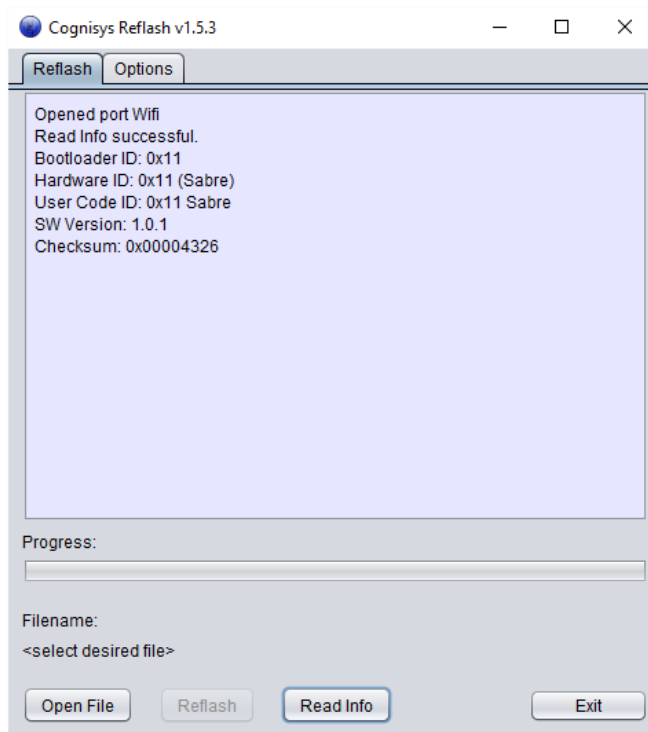
Your Sabre must be in bootloader mode in order to reflash it.

1. With Sabre turned off, press and hold the power button until the power LED starts flashing (approximately 15 seconds).
2. Release the power button.
3. Your Sabre is now in bootloader mode.
4. Using your computer’s Wifi settings, connect up to your Sabre.
5. Run the reflash program.
6. You should now see the following or similar:



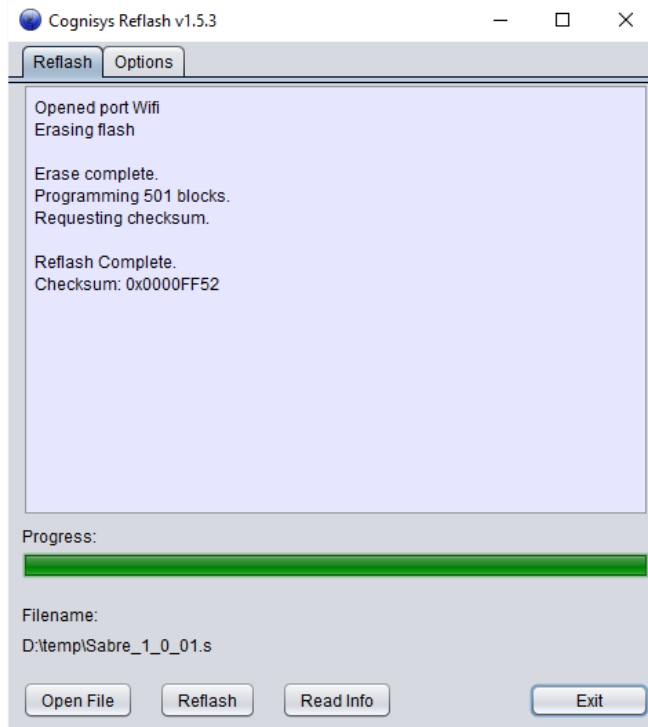
7. Click the “Read Info” button. If the program responds with “could not open a comm port or target not bootstrapped”, be sure that the Sabre is flashing its LED (indicating it is in bootloader mode). If you continue to see this problem, temporarily disable your computer’s firewall. At this

point you should see text similar to the following:



8. Click the “Open File” button and select the new firmware. The firmware will end in a “COG” extension. If the file was read properly, the “Reflash” button will become active.
9. Click the “Reflash” button to begin the reprogramming process. This should only take a few seconds. Do not interrupt the process. If an error appears press the Reflash button again (making sure the controller is still in bootloader mode).

10. At the end of the reprogramming, you will see text similar to the following:



If you have any issues with the reprogramming process or installing the reflash software, please contact us at [support@cognisys-inc.com](mailto:support@cognisys-inc.com).